

CLARKE STREET

HILTON POCKET PARK OPPORTUNITY

COMMUNITY ENGAGEMENT FINDINGS



FINAL VERSION - MARCH 2017

CONTENTS

1. Introduction.....	3
Community engagement objectives.....	4
Community engagement approach.....	7
Participant snap shot.....	8
Consultation findings.....	9
2. Location.....	10
3. Ideas.....	13
4. Concept design input.....	16
5. Children's consultation.....	19
6. Phase one findings.....	21
7. Draft concept design.....	22
8. Final design	28
9. Next step.....	30

1. INTRODUCTION

In September 2016, the City of Fremantle (City) announced plans to explore the possibility of creating a pocket park in Hilton, in consultation with local residents. The location of the park is in a section of closed road reserve at the eastern end of Clarke Street, near Hines Road.

As part of a strategy to green Fremantle, the City is working to provide public open space within walking distance for every resident and worker in the City of Fremantle. The 400m walkable catchment target is derived from the basic building block of walkable neighbourhood design. The idea is the community has access to public open space within a five minute walk, which is about 400m.

Previous community input and mapping has identified the area of Hilton north of South Street and east of Carrington Street does not meet this target. There is no public open space in the area and busy roads such as Carrington and South streets are a barrier to using public open space on the other side of Hilton and in the neighbouring area of White Gum Valley.

The lack of available sites for public open space development in the area led the City to consider use of verge areas, wide road reserves and drainage sumps to assist in taking up this shortfall. In early 2016, a detailed analysis of potential open space in Hilton was undertaken, taking into account a range of factors:

- land ownership
- site conditions, services and site-work requirements
- pedestrian accessibility
- public transport accessibility (ideally within 500m of a bus stop)
- road accessibility
- nearby facilities
- surrounding amenity
- passive surveillance
- population and demographics.

An area of approximately 600 square metres of closed road reserve and adjoining verge at the end of the Clarke Street cul-de-sac was selected as a potential pocket park site because it:

- is City-owned land
- requires minimal site works
- has good footpath connectivity
- is near public transport (three bus stops at Carrington, South & Watkins Streets)
- has good passive surveillance

- has a high number of households with school-aged children.

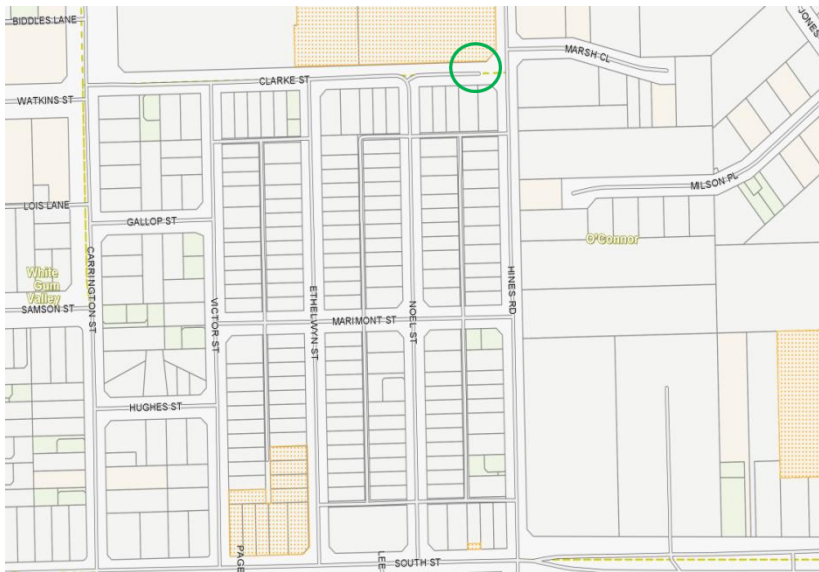


Figure 1 and 2: Site of the proposed Clarke Street Pocket Park



A key aspect of the Clarke Street Pocket Park project is consulting with local residents to obtain feedback during the design process.

Community engagement objectives

A community engagement approach was designed to hear from residents and property owners north of South Street and east of Carrington Street and learn more about their views on the opportunity for a pocket park in their neighbourhood.

The first phase of community engagement commenced on 26 September 2016 and concluded on 14 November 2016, and had the following objectives:

- To raise awareness, among residents, property owners and other stakeholders of the opportunity for a pocket park in the area.

- To understand the level of community support for a pocket park at the proposed location on Clarke Street and generate ideas on what the City of Fremantle could do to improve the site for community use.
- To build stronger relationships with local residents and explore possibilities for their involvement in the construction of the park, such as community planting day.



To achieve these objectives, the community engagement consisted of three main components:

1. A 'pop-up park' event on Clarke Street for residents and other stakeholders to discuss issues and options for a pocket park on the site. Inclement weather on the afternoon of the event required elements of the pop-up park to be scaled back.
2. *My Say Freo* – project webpage and an online survey and discussion forum to inform the community about the project and allow broad community participation
3. A community design workshop, including activities to consult with children.



Images from the community design workshop held on 29 October 2016.

Community engagement approach

The six week consultation period included activities to inform the community of the consultation program and activities to elicit their opinions and feedback. Techniques used to **inform** the community about the Clarke Street Pocket Park included:

- Letters were sent to every household in the project area announcing the opportunity for a pocket park on Clarke Street and outlining ways to obtain more information and provide feedback.
- A webpage was established on My Say Freo and updated with new information throughout the consultation period. The page also provided opportunities to provide feedback online through the community survey and discussion forum.
- Information about the project was included in City's NewsBites column in *The Fremantle Herald*, NewsBytes e-newsletter and Facebook and project updates were emailed to people who indicated that they would like stay informed throughout the project.

“ We definitely need a park in this little precinct and a small park is better than no park.

- Online survey, 12 October 2016

”

Techniques used to **consult** the community included:

- A pop-up park event was held at Clarke Street on 8 October 2016. The event provided residents with an opportunity to learn more about the Clarke Street pocket park opportunity; to ask questions of the project team; to share their ideas or concerns; and to hear the views of other members of the community.
- An online survey was open from 26 September – 27 October 2016. This was designed for those who were unable to attend the face-to-face consultation events. Respondents were asked for their feedback on the location of the proposed park and to share their ideas for the site.
- A design workshop was held at the Hilton Community Centre on 29 October 2016. The workshop provided participants with an opportunity to provide feedback on the site analysis and emerging design ideas and options developed by the project team's landscape architect.

Participant snap shot

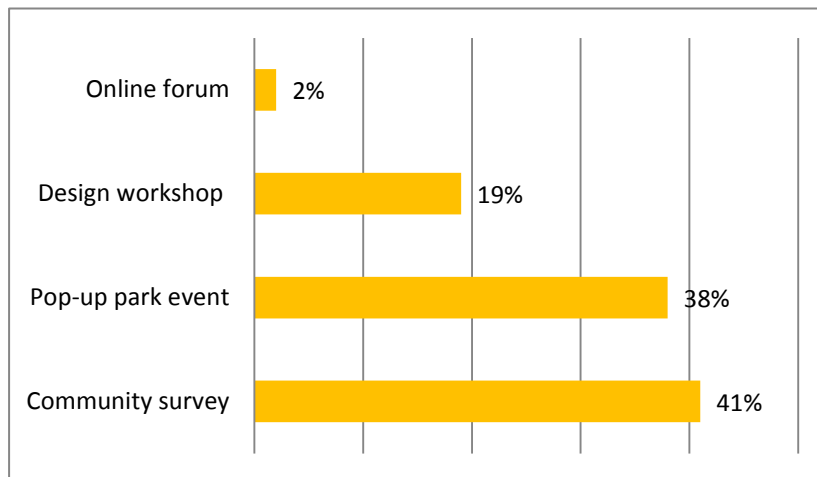


Figure 3: How people chose to participate

- 63 people participated in the consultation activities.
- Approximately 42% of participants were aged between 35 – 49 years and 14% were aged between 18 – 34 years. Just 7% of participants were between 60 - 84 years old and 37% were under 17 years.
- Approximately 77% of the participants live in the project area (Hilton north of South Street and east of Carrington Street), 10 % live in the surrounding area of Beaconsfield and the remaining 3% were from the broader Perth metropolitan area.
- Approximately 58% of the participants live on Clarke Street or intersecting streets including Ethelwyn Street, Hines Road, Noel Street and Victor Street.

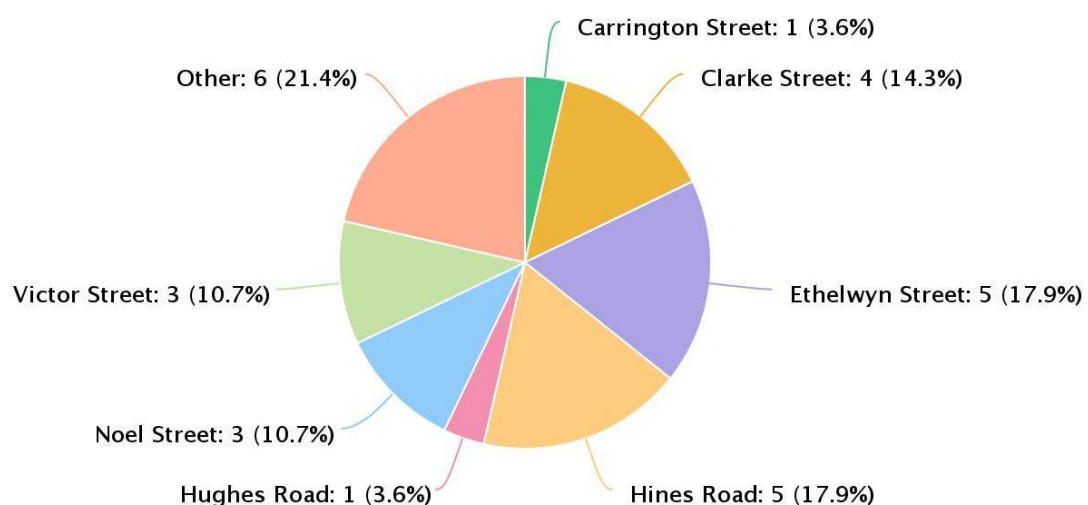


Figure 4: Streets represented

Community engagement findings

The following sections are a summary of feedback received from the community during the consultation process. The feedback is structured around the key questions posed to the participants at each stage of the community engagement:

1. What's your response to the idea of a pocket park at the east end of Clarke Street?
2. What are your ideas for the site?
3. As we prepare to develop a concept design, what's your feedback on the various design ideas and options presented?
4. As a local neighbourhood park, does this draft design adequately fulfil your needs?



Consultation on-site with local residents 8 October 2016.

“ A park, pocket or otherwise, in our precinct would be of massive benefit to a community that is already striving to make neighbourhood connections through a Street by Street group. *Online survey, 6 October 2016* ”

2. LOCATION

The majority of participants responded positively to the idea of a pocket park on Clarke Street. They acknowledged that a pocket park would provide a place for local residents to enjoy, provide relief from being 'hemmed in' by busy roads. They also acknowledged that the space would provide trees and greenery; have places to sit and relax and for children to play and people to come together; and contribute to making the neighbourhood friendlier, greener and more resilient. "Absolutely fantastic. Great idea. With such a strong and committed neighbourhood, it ticks every box." (Online survey, 29 September 2016)

Inspired by the Mayor of London's pocket park programme, participants acknowledged that it was possible to create something the community could use and enjoy even in a small space.

Participants also recalled the City had canvassed an idea of creating a park in the neighbourhood in 2003, and some felt that delivery of the project was long overdue. "Very excited about this project. Hilton residents have repeatedly asked, begged and petitioned for such a site for children of the area....sadly many of whom have now grown up without such a facility being available." (Online survey, 12 October 2016)

“All nearby parks require crossing a major road, so accessibility has been a definite issue.”

- Online survey, 6 October 2016

Numerous participants raised concerns about the traffic on Hines Road and expressed reservations about pedestrian safety, in particular the safety of children. "About time this area had a park so great idea but I have serious concerns about Hines Rd. It is not footpathed and a very dangerous road with poor visibility and lots of traffic. Yes, there is a cafe nearby but it is not a safe walk to it at all." (Online survey, 8 October 2016) Some participants were concerned that a park would bring additional vehicles to the area, and create road safety issues. "Hines Rd is very dangerous with the trucks loading from the adjacent shed. I worry a park would lead people to park their cars on Hines Road, and cause accidents." (Pop-up park event, 8 October 2016)

Other participants were concerned about motorcyclists using the Clarke Street cul-de-sac to access Hines Road and advocated the design include measures to prevent them and other vehicles from crossing across the site.



View of the site from Clarke Street (top and middle) and Hines Road (bottom)

A small number (four) of participants did not support the idea of a pocket park in the proposed location at all. Two participants felt the location was unsuitable and suggested money would be better spent elsewhere, such as Booyeembera Park.

“The pocket park concept is good but what looks like the only option in this suburb puts it at the very edge of the residential area and overlooking an industrial area, which is not pedestrian friendly. Its location is not attractive and would mean it is utilised by very few and therefore its cost to construct cannot be justified. ” (Online survey, 29 September 2016).

Two Clarke Street residents were concerned that a park would bring anti-social behaviour, noise and vandalism to their street and were strongly opposed to the idea. “A garden was trashed there a few years ago, and I’m worried it will happen again.” (Pop-up park event, 8 October 2016)

Living close to the proposed location, these residents were also concerned about community safety, insufficient parking, no turning circle on the street for cars and a view of the Perth city skyline from their property being blocked by future tree planting.

Described below are the key comments about the proposed location:

Supportive

- Good use of space.
- Addresses an important community need.
- Neighbourhood needs usable green space.
- Positive for kids to have a park to go to without crossing major roads.
- A good outcome can be achieved even with a small space.

Concerns

- Safety of Hines Road
- Noise and safety
- Cars and parking
- Need to address the whole neighbourhood and add more trees and benches on pedestrian links to South Street shops.

“ Conversion of this piece of lot to a small park will provide a beautiful landscape in this area. ”

- Online survey, 29 September 2016

3. IDEAS

Participants suggested a broad range of amenities for the site. These ranged from picnic areas, and tables and chairs. It was also suggested that exercise equipment be provided in the new park along with a path to ride bikes and scooters, a community notice board or blackboard and a storage facility for books to assist a community library or book exchange programme. Drinking fountains were also suggested, as were water sensitive urban design features. Others suggested a rubbish bin and clean up dog bags be provided. Incorporating art into the park was raised as an idea, including art work created by local residents.

Participants also felt that play equipment should be provided and nature play was frequently mentioned. Specific ideas for nature play included a place for children to build cubbies and climb trees, logs for climbing on and a large clay pipe 'tunnel'. Local community members felt there should be no bright colours used on any fixtures or play equipment. "There should be no plastic play equipment." (Pop-up park event, 8 October 2016) Seating for parents near the play area was also mentioned by a number of participants.

Participants had many ideas in relation to the future vegetation on the site. Most felt the park should continue the native landscape of the Clarke Street verge. "In line with the neighbourhood plantings of indigenous tubestock, I would like to ensure that whatever happens here, only indigenous native plantings used. The neighbourhood has been covering for the work that council and Spudshed should have been doing on the Clarke Street verge. It would be nice if this could be respected during this pocket park process and have that work extended so that there was a unified approach here respecting the value and importance of indigenous plantings in the design." (Online survey, 12 October 2016)

It was also suggested that screening the warehouse that runs alongside Clarke Street with planting would be an important design element to ensure the park integrated with the residential surroundings and the park was buffered from the industrial area. Many felt that the design needed to address the safety of the children, and include a barrier or fence that could be softened with planting along the Hines Road verge to prevent children from running on to the road.

“ An additional green space for wildlife, beautification of an area, somewhere to catch a bit of shade during the day and a path with some sort of interesting seating for anyone wanting to take a brief respite there. ”

Online survey, 12 October 2016



Idea images shared with the participants

Some felt that the location would be better integrated if whole area was designed to include more green and have pockets of interest and areas to quietly rest or meet neighbours. “When you stand at the top of Clark St and look over this node there are no tall trees visible which leaves a grid of hot bitumen streets. The intended small park sits in isolation. The closest parkland is a 10/15 minute walk away over busy roads to Hilton, Beaconsfield and Steven St golf course/ reserves. The future increase in population numbers in this node and the lack of parkland requires that this area is seriously traffic calmed and the narrow verges landscaped and treed so that this node becomes a parkland/village in its own right which offers safe and secure movement for children and residents who wish to enjoy the pocket park and shops and facilities on South St. The odd seat along the way to sit, meet and talk to the neighbours would not go amiss. This is a very friendly and inclusive neighbourhood.” (Online survey, 9 October 2016)

Described below are the key ideas for the site identified by the community:

- Native vegetation
- Nature play
- Community gathering space
- Seating areas
- Exercise
- Screen industrial area
- Hines Road barrier

“ For children to play, to meet friends, to enjoy a quiet green space, to walk a dog, to bring the community together ”

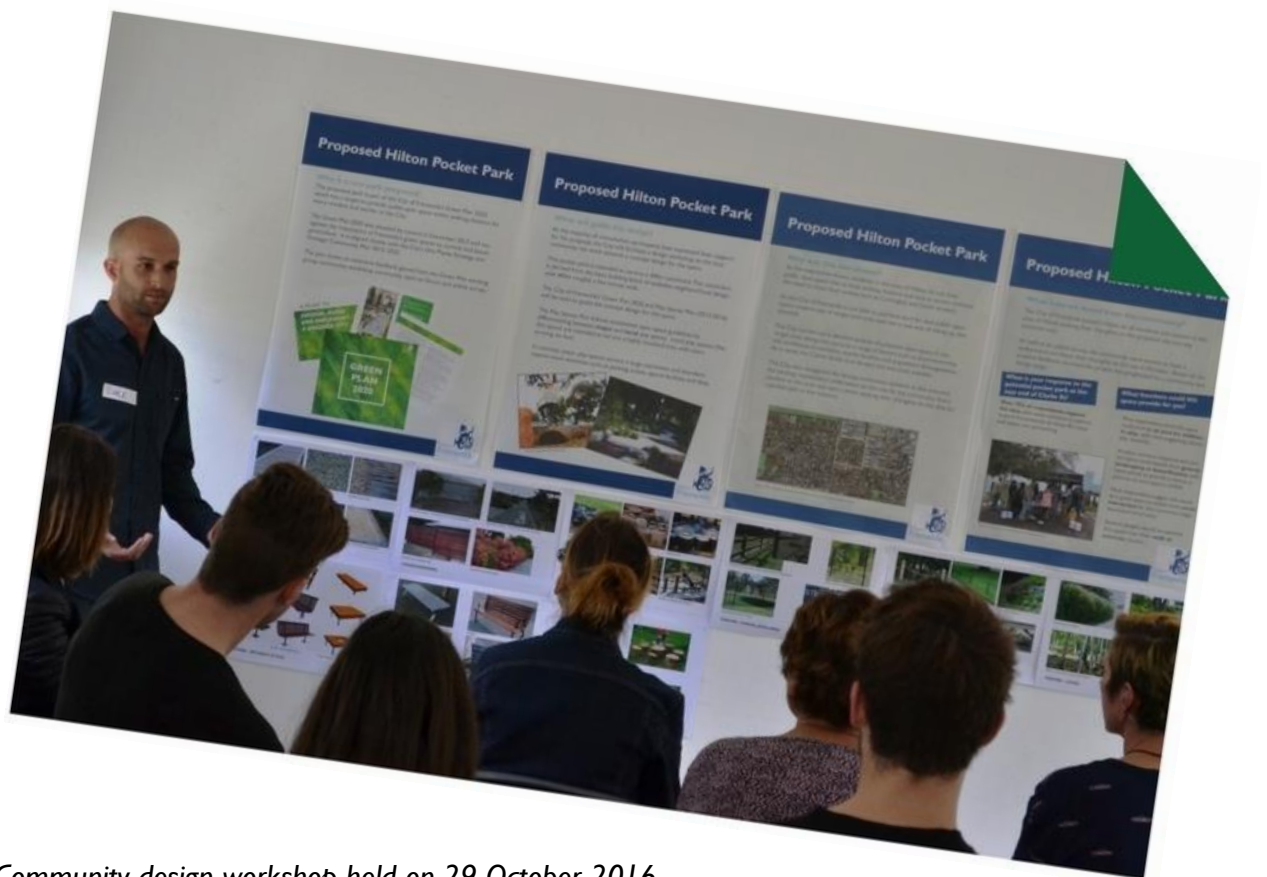
Online survey, 8 October 2016

4. CONCEPT DESIGN INPUT

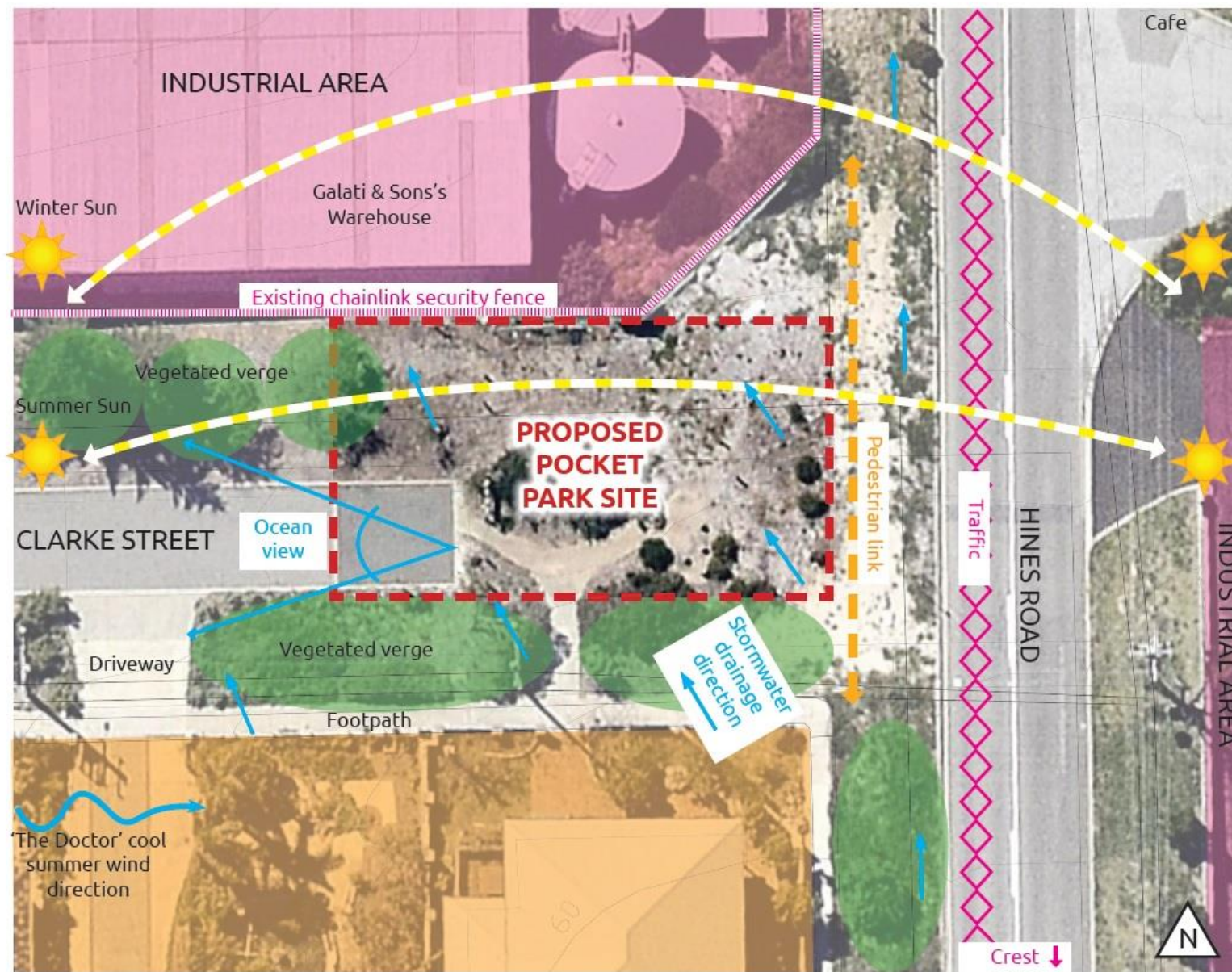
In response to the community support for the proposed location and ideas suggested for the site, community members were invited to participate in a workshop to contribute to the development of a concept design.

A site analysis was presented by the city's consultant landscape architect along with a range of design options in response to the unique opportunities and constraints of the Clarke Street pocket park site.

The workshop was designed to allow participants to consider a range of options for landscaping, play equipment, framing site views, safety and security and amenities and provide feedback to inform the draft concept design.



Community design workshop held on 29 October 2016



SITE FEATURES

LOCATION - edge of industrial/residential area

VIEWS - industrial to the north, ocean to the west

TOPOGRAPHY - Sloping to the northwest

ACCESS - Road reserve, Clarke St Cul-de-sac, Hines Rd to the east. No pedestrian path link

VEGETATION - Existing verge planting maintained by local residents

PARKING - Limited parking

SECURITY - Visible from adjacent houses

SAFETY - Hines Rd very busy with trucks from Galati's, road crest to south

CLIMATE - Mostly sunny, exposed to 'the doctor' summer westerly winds, semi protected from the northerly winter storms

CLARKE STREET POCKET PARK - COMMUNITY WORKSHOP - 29/10/2016
SITE ANALYSIS

In response to the site analysis and design ideas presented, participants at the design workshop offered the following feedback and suggestions:

Landscaping	<ul style="list-style-type: none">• Retain planting on verges – enhance – buffer to adjoining residents• Use texturally different plants to create interest.• Use flowering/bird-attracting plants. Species such as grevillea 'Robyn Gordon', native wisteria and native geranium, hardy herbs such as rosemary and lavender were suggested.
Play	<ul style="list-style-type: none">• Nature play elements need to be interesting for kids – not just adults liking the look of timber• Clay pipe tunnel – with landscaping on top.• Create a custom slide that utilises the slope, like the one in Valley Park in White Gum Valley• Opportunities to extend play area/s west down verge next to warehouse.
Views	<ul style="list-style-type: none">• Screen the shed with trees• Large trees for shade – views cannot be bought (in response to concern that trees may block skyline view)
Safety and security	<ul style="list-style-type: none">• Prime treatment near Hines Road is to stop the 2 year old 'bolter'• Low fence along Hines Road with entry/exits north and south• Put play equipment away from the fence• Like mesh fencing as it's consistent with the 1950's character of the suburb.• Clarke Street• Mound towards Hines Road – provide interest, barrier to Hines Road and 'berm' path for kids on scooters/bikes
Park amenities such as seating, shade and paths	<ul style="list-style-type: none">• Seating next to the mound or 'cut in' to the mound – looking west to the ocean.• Include a perimeter path for walkers and kids to ride on.• Keep bitumen section for parking and turning – could be turfed, but still allow for cars.• Blackboard for community members to use to share information, as an alternative to a community noticeboard. Could also be used a play element.• No rubbish bin – creates too many maintenance issues.• A small number of bike racks would be valuable.• Can the verge near the park be included in the design?• Space for workers in the industrial area to use during breaks, who have been observed using the ditch because there is nowhere for them to go when on breaks.

5. CHILDREN'S CONSULTATION

Children were consulted as part of the first phase of the Clarke Street Pocket park project. Approximately six children participated.

The session was structured around a walk in Hilton Community Centre. The children collected items (leaves, stones, seed pods and so forth) to use in making a park as an activity at the end of the walk. The children identified that the local community (neighbours, kids and adults) would come to the park as well as animals.

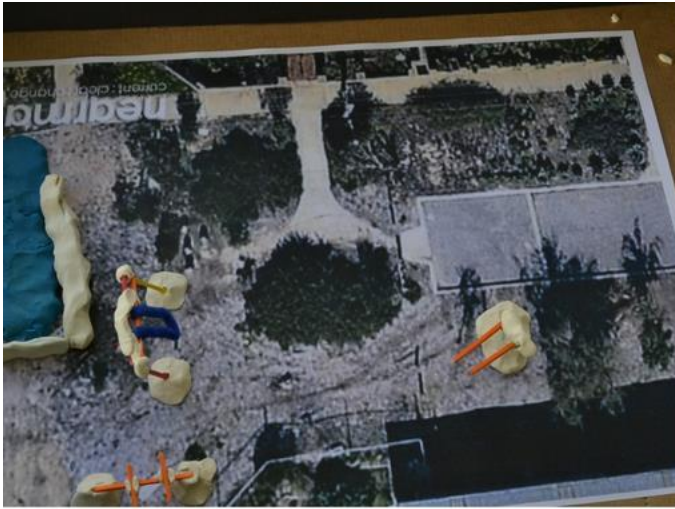
The children talked about some the types of things they like to see in a park, such as 'living things and nature' and things they like to do such as swinging, climbing, balancing, being in a cubby, discovering ('finding things in nature') and being with friends. The children also talked about their experience of other parks and things they particularly liked such as monkey bars, swings (nest or any type), seat or stand-on flying foxes (like Mundaring) and the naturescape at Kings Park.



Children's activities at the community design workshop held on 29 October 2016

“Tunnel underground with a cover on the holes.”

Pop-up park event, 8 October 2016



Elements in the models (pictured above) made by the children included:

- seating for the adults
- stepping rocks
- things to balance on
- things to climb
- swings
- monkey bars.

6. PHASE ONE FINDINGS

As an outcome of the consultation process a number of community values have been identified to inform the design and underpin the development of the concept plan:

-
- 1 Create a native pocket park which complements the landscape character of Hilton and existing verge vegetation.
 - Local species selection supporting biodiversity.
 - A variety of opportunities for natural shade.
 - Planting and vegetation structure that 'frames' pleasant views.
 - 2 Create a place which provides passive and active recreation opportunities for all members of the local community, including workers in the adjacent industrial area.
 - Integrated children's play and (all ages) recreation spaces.
 - Passive, reflective and quiet spaces and features.
 - Opportunities for occasional community get-togethers.
 - 3 Create a place that is safe from the traffic using Hines Road and deters other vehicles using Clarke Street as a thoroughfare to Hines Road.
 - Low fencing, with planting.
 - Barriers at access points to Hines Road.
 - 4 Design a place for creative and natural play.
 - Range of natural elements including stone, timber and vegetation.
 - Opportunities that stimulate the imagination.
 - Provide opportunities to play alone or with others and cater for a wide range of ages.
 - 5 Provide an appropriate level of amenities to support the park users.
 - Seating to suit functional needs with shade and shelter.
 - Access paths.
-

7. DRAFT CONCEPT DESIGN

The community values (see page 20) were used as the basis for the draft concept design developed by the landscape architect. This process also involved specialist City staff to ensure the project could be delivered within budget and maintained long term. A copy of the draft concept design was distributed as follows:

- interactive version on My Say Freo as well as a file for download
- printed copy sent to every household in the project area with a letter
- email update sent all previous participants who opted-in.

The community were asked to provide their feedback on the draft design by answering the question:

“As a local neighbourhood park,
does this draft design adequately fulfil your needs?”

If the design didn't meet their needs they could provide further comments or discuss their concerns.

Ten people provided feedback on the design (eight via survey, one verbal and one via email). Only half of these attended either the drop-in session, workshop, or completed the initial survey.

Seven people were happy with the draft design as-is and suggested improvements were:

“ I would like to see swings for kids and/or climbing frame. I would like a gate onto Hines Road (I would not be comfortable with young children able to slip out quickly onto Hines Road. It's too dangerous on the ridge of the hill).

Online survey, 15 February 2017

I think this plan is getting there but needs something a bit more active for kids. And safe from road.

Online survey, 15 February 2017

”

“

As the parent of a young child, unfortunately there isn't anything for them in the current design. I'd like to see the design incorporate more child friendly activities, possibly a slide, swing set and small playground as there is currently no playground in this pocket of Hilton. Recently it appears a lot of young families have moved into the area.

Online survey, 20 February 2017

Only older children (4yrs up) can really benefit from a 'Nature playground' as I have found they don't hold the attention or proved a safe play area for young children, understanding it's such a small area even a small scale slide or swing would be at least useful to a wider age group and could be combined with the nature setting?

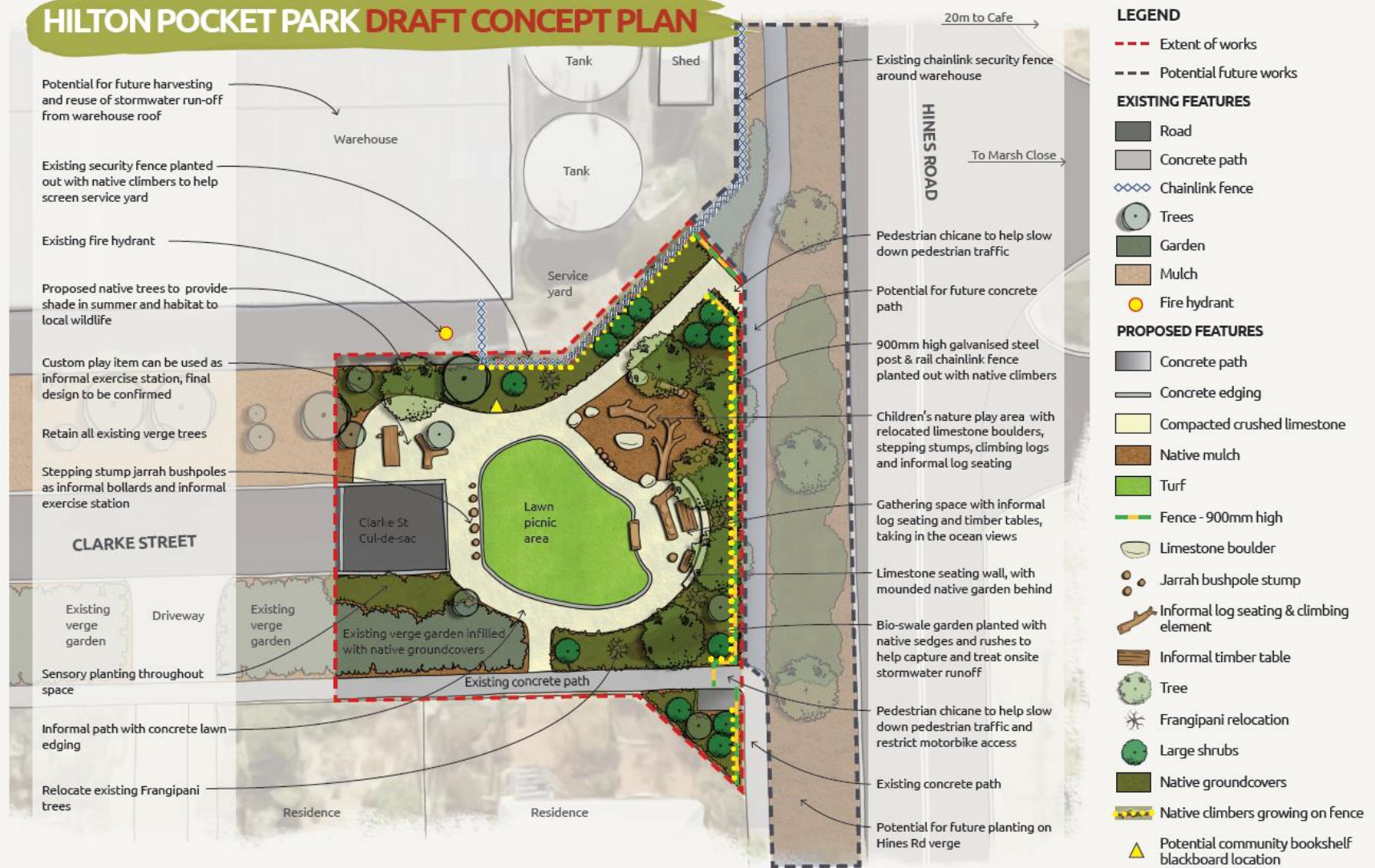
Online survey, 18 February 2017

I don't want there to be a pedestrian chicane at the top of the hill (sw corner) [due to bicycle and postal delivery access]. I think the other one at the brow of the hill leading out to Hines Rd is important though.

Email, 15 March 2017

”

HILTON POCKET PARK DRAFT CONCEPT PLAN



PROJECT TITLE HILTON POCKET PARK
CLIENT CITY OF FREMANTLE LOCATION CLARKE STREET
DRAWING TITLE DRAFT CONCEPT PLAN
PROJECT NO. 1622 ISSUE DATE 09TH DECEMBER 2016 DRAWN/CHECKED BY LP/RR DRAWING NO. CP-01 PAGE NO. 1 OF 1



0 1 2 3 4m
SCALE 100 @ A3

T 08 9433 3721 E design@joshbyrne.com.au W joshbyrne.com.au
A Suite 109 Atwell Buildings 3 Cantonment Street Fremantle WA 6160



Other feedback and comments about the surrounding area received:



I think it is a good representation of our initial planning ideas, I wonder when the proposed building will take place? Online survey, 16 February 2017

Other than these ideas [small scale slide or swing and traffic calming] I think a wonderful job has been done at creating a perfect little pocket park for this area on Hilton which many young families can enjoy. Many thanks.

Online survey, 18 February 2017

I can see a fenced area is arranged along Hines Road. I would like to see some speed bumps or speed decreasing traffic islands placed from the south street entrance on Hines road towards the park until just over the hill. The main issue is the amount of traffic (and large trucks) has increased at an alarming rate in the last couple of years along this road and being set right on a hill leaves a blind area for trucks and cars who constantly speed up and over the hill, right where the park is situated. Online survey, 18 February 2017

Overall it is good - my comments are: Will there be dog poo disposal bags available? & if people walk their dogs to the park, a place to tether their leads for a short while they might sit and have a rest, or tend to their child?

Is the limestone path suitable for young children's bikes/skateboards/ scooters?

Will there be lighting? Especially for evening use in summer - and for security?

At some point display the ranger's phone number (or a security firm's) for people to call on the spot if they notice anything damaged or inappropriate behaviour.

Online survey, 25 February 2017

How are you going to water the small lawn? I would prefer no lawn but can see that it might be desirable for children/babies etc.

Online survey, 1 March 2017

I think they have incorporated everything we asked for well done. Is there any chance we could also have that bitumen turn around incorporated to give a little more space.

Online survey, 7 March 2017

If we would want to get to this park safely [from Peel Road] we would still need a footpath on Milson Place. Thank you

Online survey, 9 March 2017

They included everything we asked for.

Verbal feedback, 20 March 2017

Disappointed to see the existing verge gardens will be snatched back by the council. I don't think the frangipanis need to be relocated do they? Why do you want to take over this adopted verge?

What is 'sensory planting'? Why pull up what has been planted to replace with 'native scrub' ground cover?

'The Bioswale garden' - we are concerned this will become a breeding ground for mosquitos.

Are we keeping the two parking spaces at the east end of [Clarke] St?

As most of this area was previously tarmaced and possibly not broken up when covered that it will be extremely difficult to plant anything significant in this area (eg large shade trees) Has this been allowed for in the calculations.

Email, 15 March 2017



8. FINAL DESIGN

The majority of the responses concern increasing active equipment for children and ways to balance pedestrian safety with access to the site. In response to this, the 'custom play item' specified on the draft concept plan has been specified as a custom swing.

The final detailed design will carefully balance access to the site with inhibiting informal motorbike access and stopping young children doing a 'bolt' towards Hines Road. At this stage the pedestrian chicane (designed to allow for bikes, prams, wheelchairs and postal delivery) remains the preferred option to achieve this, as gates can provide problems with access for all and a need for ongoing maintenance.

The other queries not addressed above are covered below:

Planting

- Verge gardens - The intent is not to take over the community verge but to increase planting. The proposed frangipani relocation will be discussed with adjoining property owner.
- Vegetation removed - The only vegetation proposed to be removed is the shrubs in the centre to make way for the lawn picnic area and maybe two shrubs towards Hines St, replanting as per the plan will take place.
- Sensory planting – Means plants that smell and look nice.
- Lawn – The lawn has been provided as a space for play and informal gatherings. Scheme water will be used for irrigation with opportunities to utilise off site water harvesting being explored.
- Bioswale garden - This is where the water flows, pools and drains into the ground at the moment. The bioswale will be planted so the water will still drain quickly and also have uptake by the plants so there won't be water pooling for mosquito breeding.
- Tarmac – the cost estimates include contingency should buried road base be present and required to be broken up for deep tree planting.

Access

- Cul de sac – The two parking spaces / turnaround at the end of Clarke Street will remain as-is.

Amenity

- Dog waste – Disposal bags will be explored in the detailed design of the park.
- Lighting – The cost of providing additional lighting is expensive and not included in the cost estimates. There is an existing street light directly above the park area.
- Path access – the limestone paths are suitable for bikes and scooters, but not for skateboards.

HILTON POCKET PARK CONCEPT PLAN



9. NEXT STEP

The next step is to present this report along with the final design to Council in April 2017.

A budget of \$50,000 for detailed design and construction will be requested for council consideration in the 2017/2018 budget. The outcome of this will be known in June or July 2017. If successful the detailed technical design would be completed and then construction and planting could happen during the next winter (winter 2018).

An email update to engagement participants will be sent at the start of April along with a copy of the final design and this report.